

Formatting the SwiMP3



Phena Magno

- Internet**
Mozilla Firefox
- E-mail**
Microsoft Office Outlook
- QuickTime Player**
- iTunes**

- Altiview 5.1
- ACCPAC
- Microsoft Office Excel 2003
- Adobe Reader 8
- Windows Media Player
- Microsoft Office Access 2003

- My Documents**
- My Recent Documents** ▶
- My Pictures**
- My Music**
- Favorites** ▶
- My Computer**
- My Network Places**

- Control Panel**
- Set Program Access and Defaults**
- Printers and Faxes**

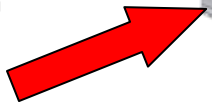
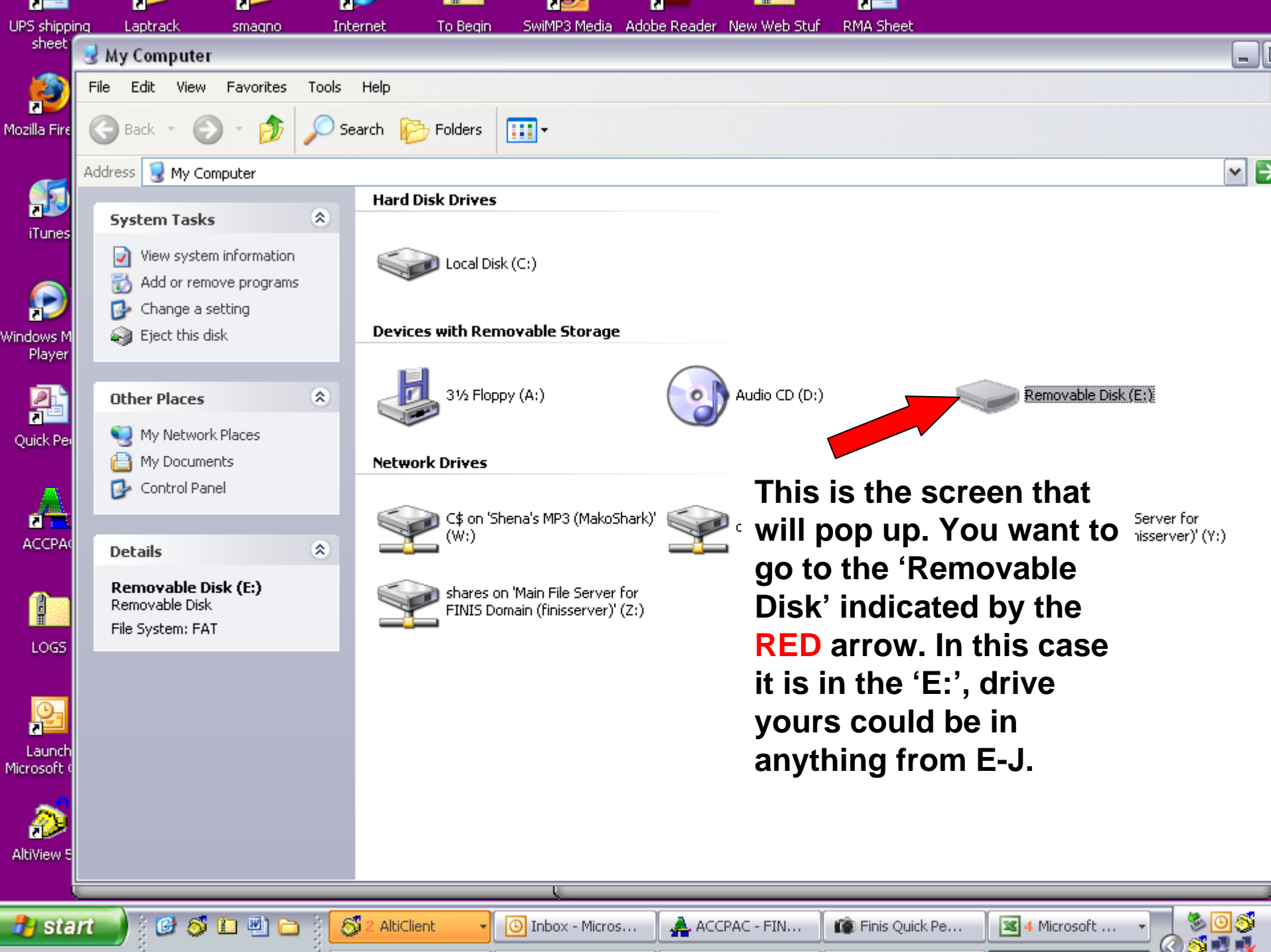
- Help and Support**
- Search**
- Run...**



Go to the start menu and go to 'My Computer' s indicated by the **RED arrow. Go ahead and double Left click.**

All Programs ▶

Log Off Shut Down



This is the screen that will pop up. You want to go to the 'Removable Disk' indicated by the RED arrow. In this case it is in the 'E:', drive yours could be in anything from E-J.

My Computer

File Edit View Favorites Tools Help

Back Forward Home Search Folders

Address My Computer

System Tasks

- View system information
- Add or remove programs
- Change a setting
- Eject this disk

Other Places

- My Network Places
- My Documents
- Control Panel

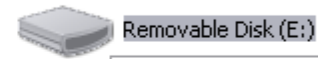
Details

Removable Disk (E:)
 Removable Disk
 File System: FAT

Hard Disk Drives



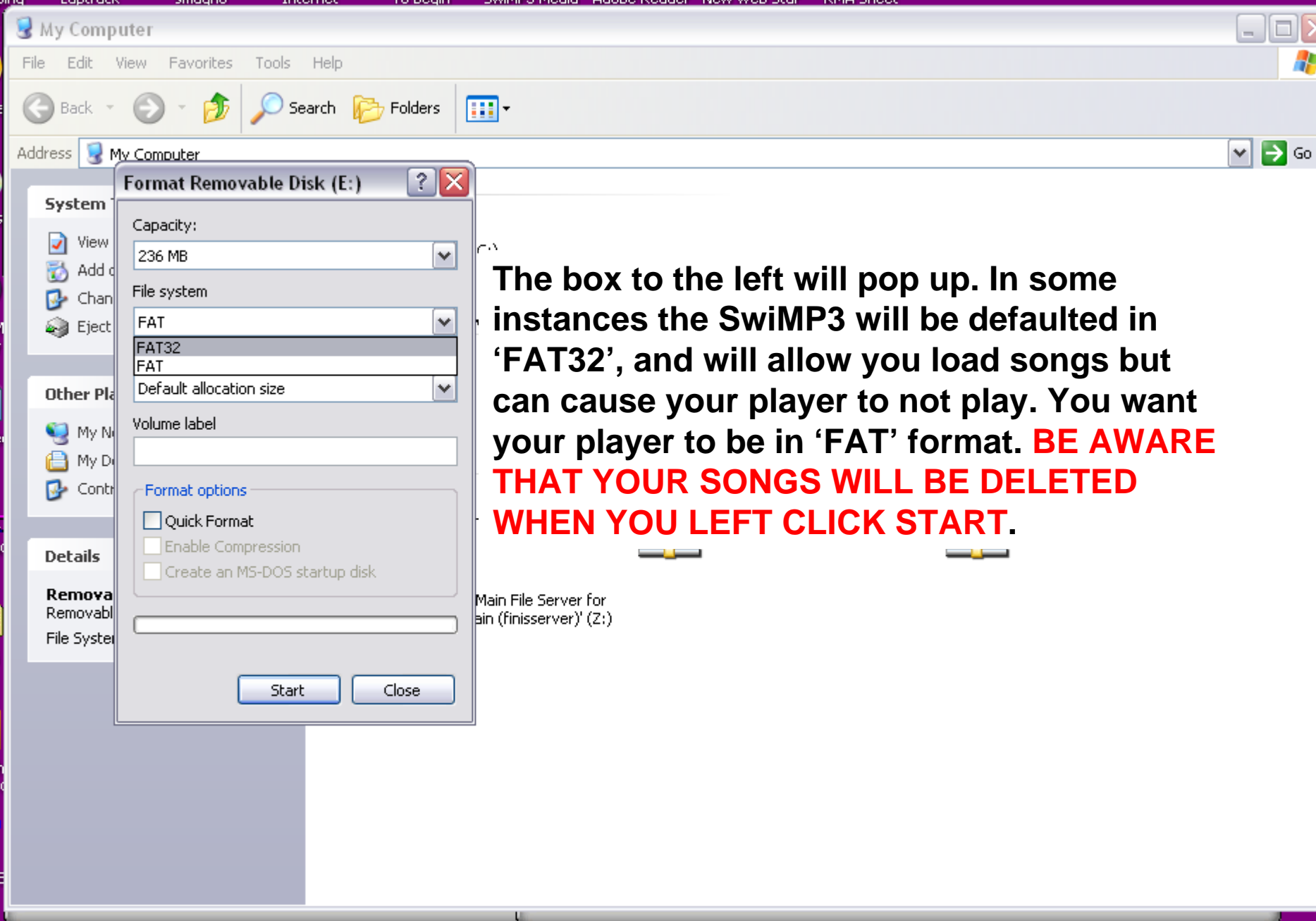
Devices with Removable Storage



**Now Right click on that removable disk.
 You will see a drop menu, scroll down to
 'Format' and Left click.**



- Open
- Explore
- Search...
- AutoPlay
- Scan for Viruses...
- Sharing and Security...
- Format...**
- Eject
- Cut
- Copy
- Create Shortcut
- Rename
- Properties



The box to the left will pop up. In some instances the SwiMP3 will be defaulted in 'FAT32', and will allow you load songs but can cause your player to not play. You want your player to be in 'FAT' format. **BE AWARE THAT YOUR SONGS WILL BE DELETED WHEN YOU LEFT CLICK START.**

My Computer

File Edit View Favorites Tools Help

Back Forward Search Folders

Address My Computer Go

This is what will pop up once you Left click. Left click on 'OK'.

Format Removable Disk (E:)

Capacity: 236 MB

File system: FAT

Allocation unit size: Default allocation size

Volume label:

Format options


Quick Format

Enable Compression

Create an MS-DOS startup disk

Start Close

Format Removable Disk (E:)

 **WARNING:** Formatting will erase ALL data on this disk. To format the disk, click OK. To quit, click CANCEL.

OK Cancel

Removable Disk (E:)

Aas on 'Main File Server for FINIS Domain (Finisserver)' (Y:)

Formatting Removable Disk (E:)

Capacity: 236 MB

File system: FAT

Allocation unit size: Default allocation size

Volume label:

Format options

- Quick Format
- Enable Compression
- Create an MS-DOS startup disk

Start Cancel

Once the SwiMP3 is done formatting you will see the box indicated below by the **RED** arrow. Left click 'OK'.

Formatting Removable Disk (E:)

Format Complete.

OK

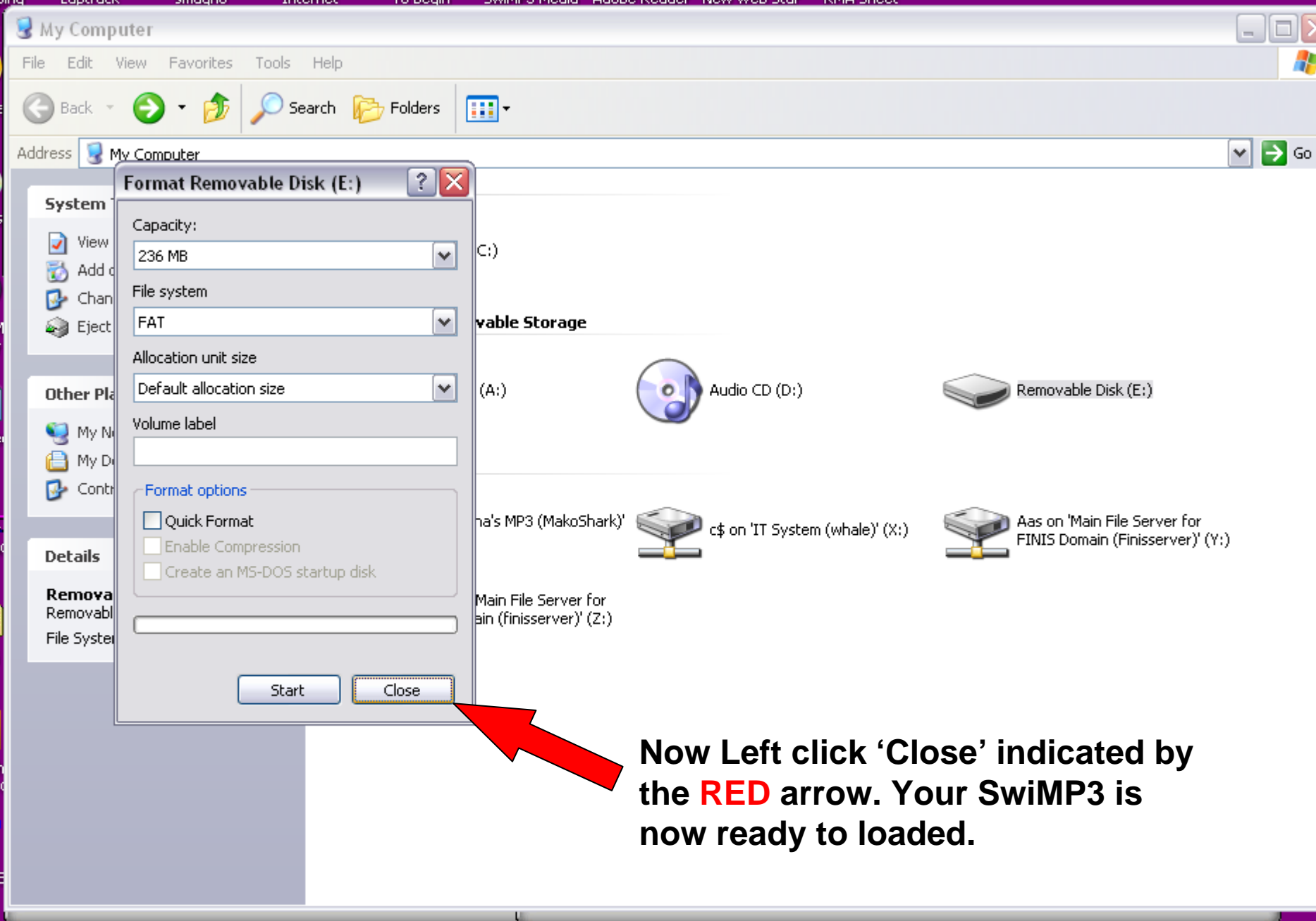
Removable Storage

(whale) (X:)

Main File Server for fin (finisserver) (Z:)

Removable Disk (E:)

Aas on 'Main File Server for FINIS Domain (Finissserver)' (Y:)



Now Left click 'Close' indicated by the **RED** arrow. Your SwiMP3 is now ready to loaded.